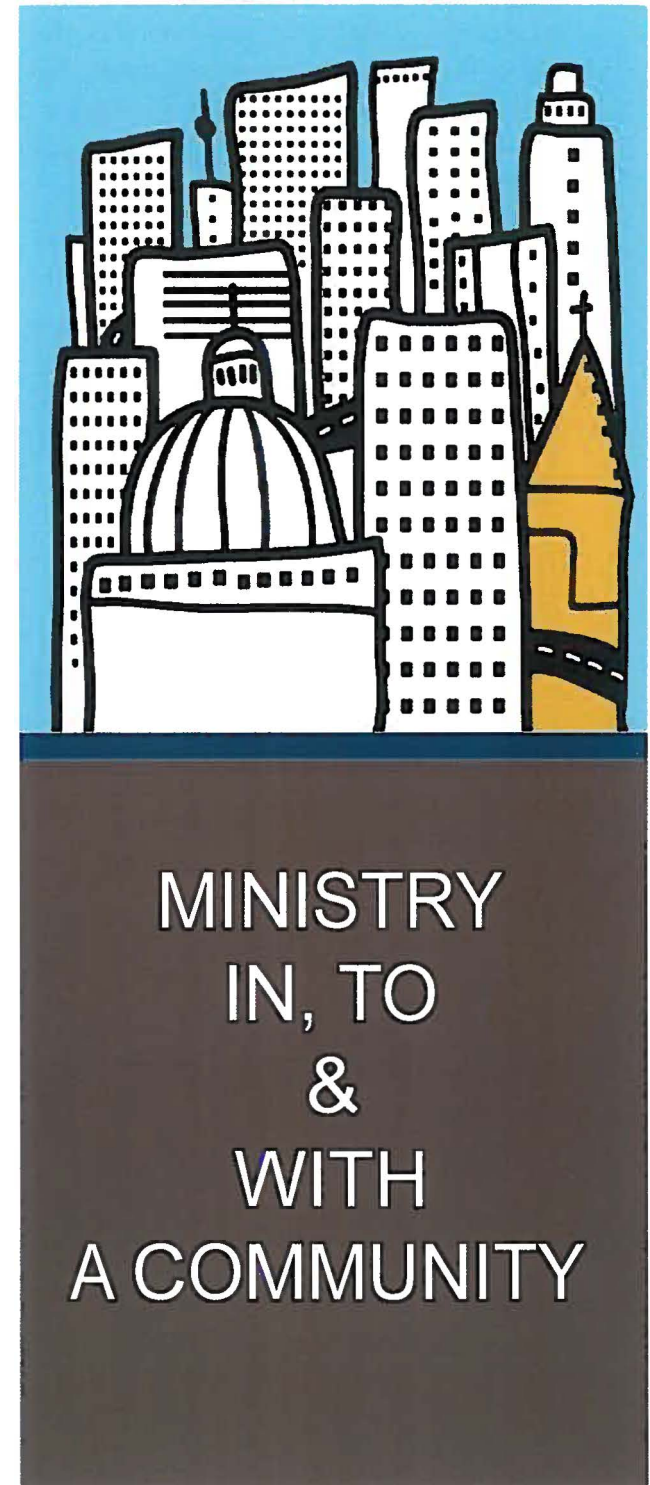


Transformed Community

Churches have language, liturgy, staff and practices that help members connect to God. What language, liturgy, staff and practices do churches have to connect to and deeply love their neighbors?

For a church to become known as a church that cares and gives life to a community, consider the following practices:

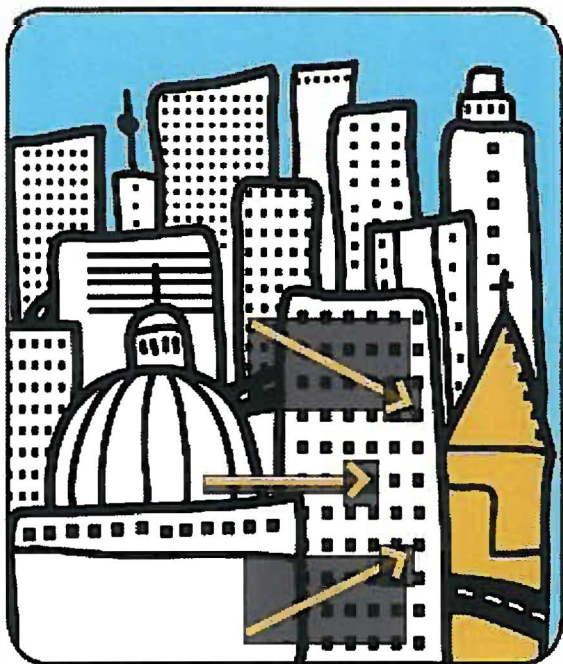
- Imagining and creating ways to convene and connect neighbors so they get to know each other and care about each other.
- Discover the gifts in your neighborhood (gifts of knowledge, skills, resources) and discover new ways to encourage gift exchanges in the neighborhood.
- Discovering, through listening (one to one conversations, small groups, input) what residents care about enough to work on it with us.
- Organizing community action groups around the things residents care about.
- Celebrating community accomplishments and milestones.
- Convene a neighborhood dreaming, strategic planning process.



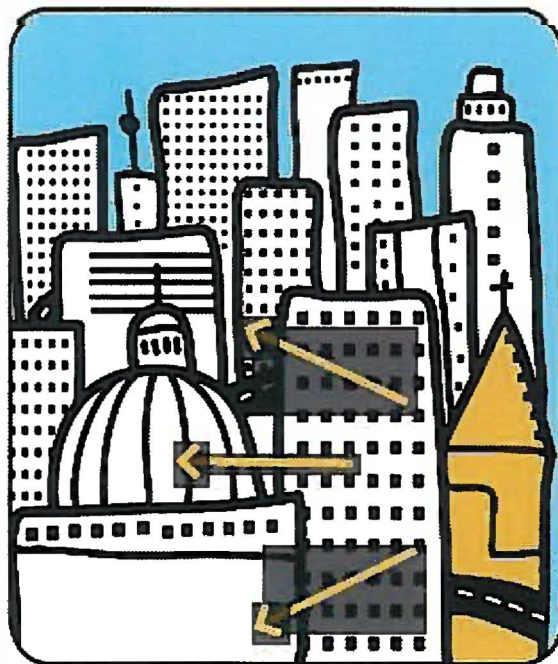
Members walk and drive to this church. Activities are by the members, for the members. Neighbors experience little or no benefit by having this church in the neighborhood.

MINISTRY TO/FOR A COMMUNITY

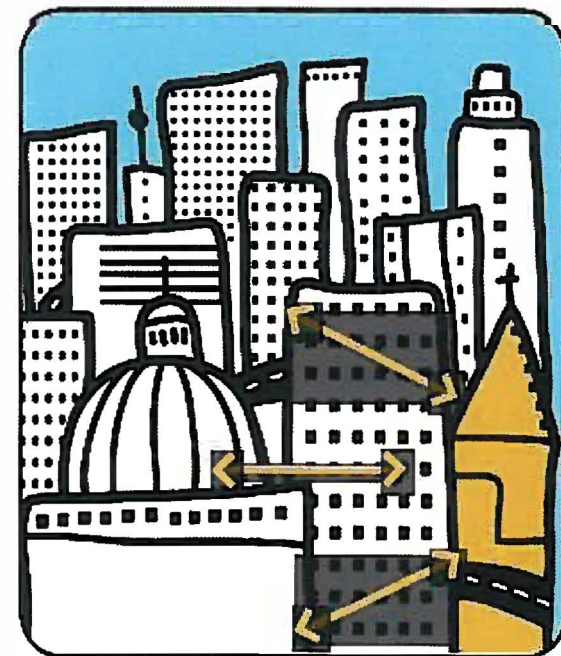
In this scenario, in addition to activities that benefit the members, this church has conversations with her neighbors. She discovers what they care about. Joins the neighbors in their agenda for community development. They work together for the common good in this neighborhood.



MINISTRY IN A COMMUNITY



Members walk or drive to this church. In addition to activities that benefit the members, this church wants to meet her neighbor. She dreams of ways to connect (vacation Bible school, youth program, summer worship events in the parking lot). The church makes the decisions, designs and implements activities to and for the community.



MINISTRY WITH A COMMUNITY

In each scenario ask:

Who has the power?

Is there a level playing field?

Is the relationship equitable?

Who is the beneficiary?

Is it empowering? For whom?

Which is most likely to produce sustainable change?